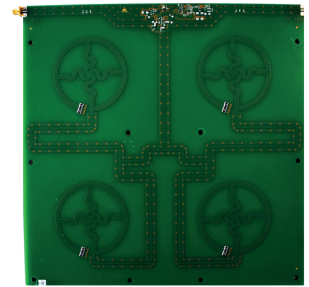


> **Features**

- Antenna module for assembly integration
- For applications in radiated near-field, suitable for static tag identifications
- Extremely thin design
- Read range: up to 1 m
- Very homogeneous reading field
- Extremely high front-to-back ratio



> **General specifications**

Order No.		52010219
Type		SMSH-30-30-ETSI-FCC
Frequency range	[MHz]	865-928
©KRAI		-
Protection cover		optional
Polarization		circular
Antenna gain	[dBiC]	typ. -7
Axial ratio	[dB]	typ. 1.5
Impedance	[Ohm]	50
VSWR		typ. 1.25:1
Front-to-back ratio	[dB]	> 20
max. input power (ETSI EN 302 208)	[dBm]	+33
max. input power (FCC 15.247)	[dBm]	+30 (at antenna port)
Far field half-power beam width	[°]	60 / 60
Connection		SMA female
Weight	[kg]	0.5
Degree of protection		indoor use only
Operating temperature range	[°C]	-20 to +55
Storage temperature range	[°C]	-40 to +85
Dimensions (L x W x H)	[mm]	310 x 300 x 8.6
Packing size (L x W x H)	[mm]	approx. 330 x 310 x 25
Material		fibreglass-epoxy resin

> **Remarks**

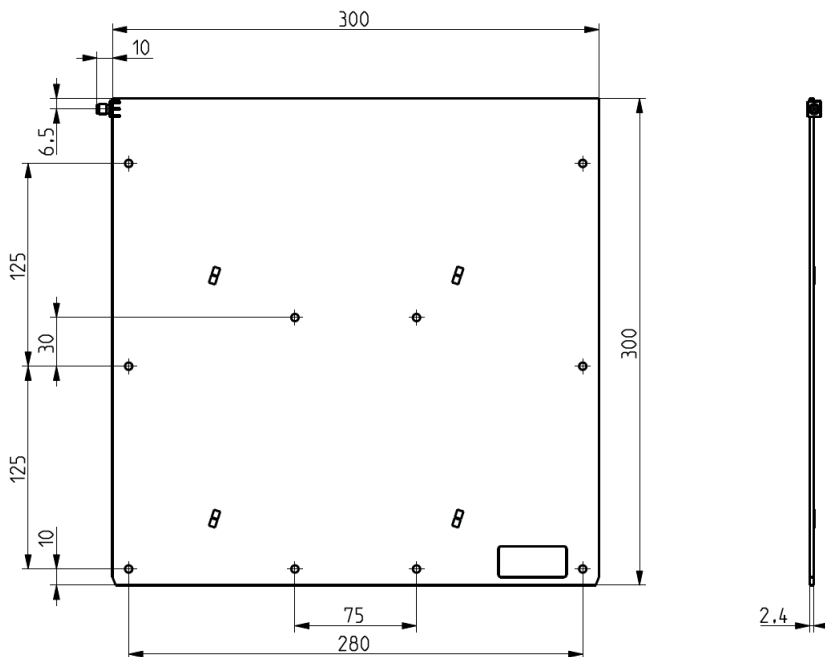
Mounting options

- 10 through-holes Ø 4.5 mm for M4 screws to mount on wall/ceiling

Accessories optional

- All accessories can be found at: <https://http://www.kathrein-solutions.com/products/hardware/accessories>

➤ **Dimensions [mm]**



Description

The SMSh-30-30-ETSI-FCC antenna was developed for applications in the field of point of sale, smart shelf applications and Kanban solutions. The antenna is characterized by an extremely homogeneous read zone, which is emitted by the high front to back ratio. Therefore it is suitable for static detection of multiple transponders. Due to their extremely thin design, the antenna module can be integrated into different applications universal.

Key Application

- Point of sales applications
- Smart shelf applications
- Kanban applications
- Conveyor belt applications