

Rugged RFID-UHF terminal for mobile data collection in Windows CE 6.0 with alphanumeric fast input keyboard and colour touch screen.



## Key Application

- Industrial
- Logistics
- Retail



## General specifications

<b>Order No.</b>		<b>52010230</b>
Type		RUH-ACD-M260-WLAN-SR-ETSI
Scanner		Mobile Terminal Barcode laser scanner (short range)
Operating system		Windows® CE 6.0
Memory		512 MB Flash / 256 MB SDRAM expandable with µSD card
Display		Colour touch display 3.5", Resolution 240 x 320 pixel
Power supply		Quick-change battery 7.5V/220mAh, Lithium-Ion
Operating temperature range		-20 to +45
Degree of protection	[°C]	IP54
<b>Communication interfaces</b>		
	WLAN	IEEE® 802.11b/g
Cover		ruggedized ABS-plastic (grey)
Dimensions	[mm]	224 x 85 x 47
Weight		1150 with battery
<b>UHF RFID properties</b>		
Frequency range	[MHz]	865-868 (865-867 for India)
Antenna		Kathrein patented X Pol linear
Read range*	[m]	7
Output power reader module	[W]	0.5
Dimensions	[mm]	104 x 104 x x 44.9
Conform to		EN 60529, EN301489-1, EN 302208-1, EN 302208-2, EN 60950-1:2006, EN 50364

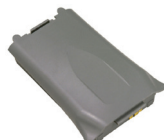
\* depending on transponder type and environment

## Accessories optional

Order No.	Type	Description
52010233	DS-RUH-ACD-260	- Housing with LED-display for transmitting the acquired data and to load the M260 - with USB interface and ethernet interface - delivery complete incl. power supply and power cord
52010234	AKKU-RUH-ACD-260	- replacement battery 7.4 V/2200mAh Lithium-Ion Quick-change battery



52010233 | DS-RUH-ACD-260



52010234 | AKKU-RUH-ACD-260