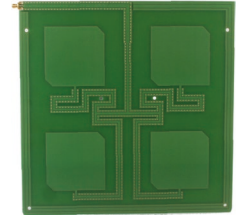


The antenna is characterised by an extremely homogeneous read zone which is emitted by the high front-to-back ratio.

Due to its extremely thin design, the antenna module can be integrated into different applications.



## > General Specifications

Order No.		52010319
Type		SMSH-HG-FCC
Frequency range	[MHz]	902–928
©KRAI		–
Protection cover		optional
Read range	[m]	3
Polarisation		circular
Antenna gain	[dBiC]	typ. 5
Axial ratio	[dB]	typ. 3.5
VSWR		typ. 1.3:1
Front-to-back ratio	[dB]	> 20
Max. input power	[dBm]	+30
Far-field half-power beam width	[°]	58/58
Connection		input: SMA female
Weight	[kg]	1.0
Degree of protection		indoor use only
Operating temperature range	[°C]	–20 to +55
Storage temperature range	[°C]	–40 to +85
Dimensions (L x W x H)	[mm]	310 x 300 x 8.6
Package size (L x W x H)	[mm]	approx. 330 x 310 x 25
Material		thermoplastic radome, UV-resistant, fibreglass-epoxy resin

## > Key Applications

- point-of-sales applications
- Kanban applications
- smart shelf applications
- conveyor belt applications

## > Accessories (Optional)

- Mechanical protective housing SMSH-30-30-PC for the upper side (order no. 52010224) to retrofit
- You can find all accessories at <http://www.kathrein-solutions.com/products/hardware/accessories>.

## > Dimensions

