

Rugged RFID-UHF terminal for mobile data collection in Windows CE 6.0 with alpha-numeric fast input keyboard and colour touch screen.



## Key Application

- Industrial
- Logistics
- Retail

## Mobile Terminal M260 Overview

### Features

Order no.	52010229	52010230	52010231	52010286
Type	RUH-ACD-M260-WLAN-ETSI	RUH-ACD-M260-WLAN-SR-ETSI	RUH-ACD-M260-WLAN-2D-ETSI	RUH-ACD-M260-WLAN-2D-3G-GPS-ETSI
Scanner	-	Mobile Terminal Barcode laser scanner (short range)	Mobile Terminal Imager (1D and 2D barcode scanner)	Mobile Terminal 3G, GPS Imager (1D and 2D barcode scanner)
WLAN			✓	
UMTS	-	-	-	✓
GPS	-	-	-	✓
UHF RFID properties			✓	

### Remarks

#### Accessories optional

- More can be found at: <https://www.kathrein-solutions.com>

➤ **General specifications**

Order No.		52010229	52010230	52010231	52010286
Type		RUH-ACD-M260-WLAN-ETSI	RUH-ACD-M260-WLAN-SR-ETS	RUH-ACD-M260-WLAN-2D-ETSI	RUH-ACD-M260-WLAN-2D-3G-GPS-ETSI
Scanner		-	Mobile Terminal Barcode laser scanner (short range)	Mobile Terminal Imager (1D and 2D barcode scanner)	Mobile Terminal 3G, GPS Imager (1D and 2D barcode scanner)
Operating system		Windows® CE 6.0			
Memory		512 MB Flash / 256 MB SDRAM expandable with µSD card			
Display		Colour touch display 3.5", Resolution 240 x 320 pixel			
Power supply		Quick-change battery 7.5V/220mAh, Lithium-Ion			
Operating temperature range		-20 to +45			
Degree of protection	[°C]	IP54			
Communication interfaces					
	WLAN		IEEE® 802.11b/g		
	UMTS	-	-	-	Quad band: EGSM 850/900/1800/1900 MHz Data band: UMTS/HS-DPA 2100 MHz
	GPS	-	-	-	NMEA protocol
Cover		ruggedized ABS-plastic (grey)			
Dimensions	[mm]	224 x 85 x 47			
Weight		1150 with battery			
UHF RFID properties					
	Frequency range	[MHz]	865-868 (865-867 for India)		
	Antenna		Kathrein patented X Pol linear		
	Read range*	[m]	7		
	Output power reader module	[W]	0.5		
	Dimensions	[mm]	104 x 104 x x 44.9		
	Conform to		EN 60529, EN301489-1, EN 302208-1, EN 302208-2, EN 60950-1:2006, EN 50364		

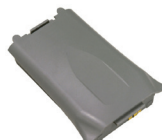
\* depending on transponder type and environment

➤ **Accessories**

Order No.	Type	Description
52010233	DS-RUH-ACD-260	- Housing with LED-display for transmitting the acquired data and to load the M260 - with USB interface and ethernet interface - delivery complete incl. power supply and power cord
52010234	AKKU-RUH-ACD-260	- replacement battery 7.4 V/2200mAh Lithium-Ion Quick-change battery



52010233 | DS-RUH-ACD-260



52010234 | AKKU-RUH-ACD-260