

The RFID windshield label serves for the automatic, contactless identification of vehicles (Automatic Vehicle Identification, AVI)

The label is attached to the inside of the windshield.

The development of the RFID windshield label has been focused on a very high read range due to the special antenna behind the glass and a passive function without a battery.

The privacy protection is realised via an untraceable command.

The label material is a combination of a PP and PET layer. Extra security kiss cuts improve security against removal and re-use.



General Specifications

| | | |
|--|--|-------------------|
| Order No. | 52010556 | |
| Type | WSL-TP-U825-K-A | |
| Frequency range | [MHz] | 865–928 |
| Delivery lot | [pcs] | 500 |
| Dimension (standard) | [mm] | 100 x 25 |
| Thickness | [µm] | 210 |
| Operating ambient temperature range | [°C] | –40 to +85 |
| Protocol | EPC Class1 Gen2v2/ISO 18000-63, ISO/IEC 29167-10 | |
| Chip | UCODE 8 | |
| Memory | | |
| EPC serialized | [bit] | 128 |
| User Memory | [bit] | - |
| Uniqe TID | [bit] | 96 |
| Read Range (on non-metalised glass in center position) | [m] | typ. 12; max. 16* |
| IT security | 32-bit kill password to permanently disable the tag 32-bit access password, Privacy protection via untraceable command | |
| Programming | 9-digit consecutive numbers in ASCII | |
| Serialisation | 9 numeric characters in clear text; barcode | |

*This read range can only be guaranteed if all the storage and mounting conditions described in the *User Guide for Windshield Labels and Headlamp Tags* are met.

Key Applications

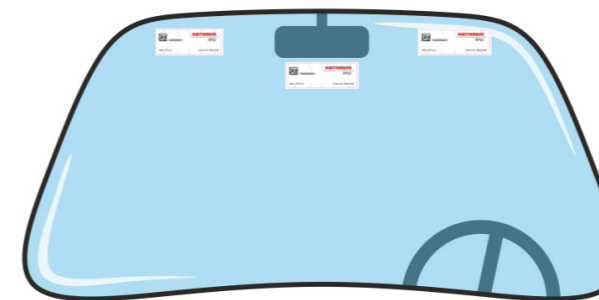
- Intelligent Transportation Systems (ITS)
- Electronic Toll Collection (ETC)
- Electronic Vehicle Registration (EVR)
- Smart City Applications

Mounting Instructions

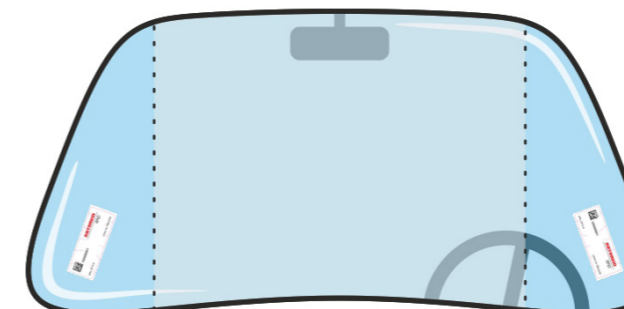
Kathrein RFID WSL transponders are optimized to get a maximum read performance on a glass surface. Based on a high-performance antenna design, it is possible to achieve read ranges of more than 12 meters.

Attach the transponder in the following areas:

Cars with standard glass windshields



Cars with heated windshields



Cars with UV-protected windshields

